

Agenda
Tolland Conservation Commission
Zoom Remote Meeting
Thursday, August 10, 2023, 7:00 p.m.

- 1. Call to Order**
- 2. Roll Call**
- 3. Seating of Alternate(s)**
- 4. Public Comments**
- 5. Additions/Changes to Agenda**
- 6. New Business – No new business to discuss**
- 7. Old Business**
 - 7.1. Photo contest status
 - 7.2. Review list of outside organization liaisons
- 8. Reports from Head Steward and Subcommittees**
 - 8.1. Conservation Corp (Bob Rubino): Updates on planning for spring and summer projects/initiatives
 - 8.2. Management Plans (Gene, Jim): Review and vote on Nedwied Management Plan
 - 8.3. Communication and Education (**Jane**): Update on women’s hike series and/or other initiatives
 - 8.4. Property Boundaries and Trail Mapping (**Adam**): No changes reported
 - 8.5. Town Owned Property Evaluations (Gene, Jim): No new properties brought before TCC since last mtg
 - 8.6. Wanat Property Design Implementation (**Peggy, Jane**): Update on pollinator garden.
 - 8.7. Grant Writing and Fund Raising (Peggy, **Jim**): Status of appraisal of Tolland Marsh Property and grant application to OSWA (CT DEEP)
- 9. Reports/Information from Other Organizations**
- 10. Staff Updates (David Corcoran)**
- 11. Items for Next Meeting**
- 12. Announcements**
- 13. Approve Minutes – July 13, 2023 Regular Meeting**
- 14. Adjournment**

To join the Zoom meeting, either click:

<https://zoom.us/j/4325402030?pwd=NG43ZHcyOXBQOGJldzZVTmQxNmhZZz09>

One tap mobile: +13017158592,,4325402030#,,, *444555#

Or call: 1-646-876-9923 and input:

Meeting ID: 432 540 2030

Passcode: 444555

**Town of Tolland, Connecticut
Conservation Commission
Nedwied Conservation Area Management Plan
Fox Ridge Lane, Tolland, CT**



A Passive Recreation Open Space Conservation Area

Adopted by Commission – 6/9/2016

Adopted by Town Council – 6/28/2016

Table of Contents

Background

I. Property Description, Access, Uses, Use Restrictions, and Visitor Responsibilities, Problems and Concerns

Property Description.....

Access.....

Uses.....

Use Restrictions.....

Visitor Responsibilities.....

Problems and Concerns

II. Open Space Management Plan.....

Management Objectives.....

Management Plan and Program.....

Property Steward(s)

III. Appendix.....

- **Aerial map with location map insert**
- **Topographical map**
- **Nearby conservation areas**
- **Trail map**

Town of Tolland Conservation Commission Property Management Plan Nedwied Conservation Area, Fox Ridge Lane

Background – The Tolland Conservation Commission is responsible for the management and oversight of properties obtained by the Town of Tolland for conservation purposes and for preparing a management plan for each property. The management plan is based upon the environmental characteristics of the property and is used to determine appropriate conservation and usage. Each plan includes a property description, an analysis of the unique characteristics and acceptable uses of the property, and a management program. The management program outlines property management; improvement needs; the individuals and organizations that manage the property; and protection needs related to the site. Each management plan is developed under the Commission’s management planning process.

I. PROPERTY DESCRIPTION, ACCESS, RESOURCES, POTENTIAL, AND CONCERNS

Property Description – The 15 acre Nedwied Conservation Area consists of 2 adjoining parcels of land, ~~with access between #106 and #116 Fox Ridge Lane and from the King Riverside Conservation Area to the south.~~ It is located in the southeast corner of Tolland near the Willimantic River. This conservation area expands the connection between the Becker Conservation Area and the King Riverside Conservation Area that are part of the Willimantic River Trail running through Tolland, Coventry and Mansfield. Visitors can continue north on to Fox Ridge Lane and then into Tolland’s River Park and Becker Conservation Area. Crossing the bridge to the south, visitors can continue on the King Riverside Conservation area and by crossing Route 195, use local roads to continue to Coventry’s Riverview Park and Mansfield’s Merrow Meadow Park and River Park.

Formatted: Strikethrough

Formatted: Strikethrough

Formatted: Strikethrough



The southern parcel is 4 acres that was obtained as subdivision set-aside in March of 2001. It is 430 feet above sea level in its southwest corner, sloping down to 360 feet above sea level at Newcomb Brook, then increasing back up to 410 feet above sea level as the property follows the old Nedwied Road northward. Newcomb Brook crosses this parcel twice before continuing under the 20 foot wooden bridge on the King Riverside Conservation Area, where it joins the Willimantic River. Because of the steep slope, there will not be trails south of Newcomb Brook.

The northern parcel is 11 acres that was purchased from the Claude W. and Sandra M. Blackington Trust in June of 2015, using Town of Tolland passive open space bond funds. The land is flat with a gradual sloping downwards towards Newcomb Brook. There are many stone walls that form the boundaries of this parcel and also cross the interior. There is a stone foundation along one of these walls. Along another stone wall is a circular stone construct.

The Nedwied Conservation Area is within an *Important Wildlife Area and Corridor* as designated by the Town of Tolland Open Space & Conservation Plan (map 12). Newcomb Brook is a *Surface and Stream Water Quality Class A* brook (Town of Tolland Open Space & Conservation Plan, map 5). The Willimantic River is a *Surface and Stream Water Quality Class B* river (Town of Tolland Open Space & Conservation Plan, map 5).

The Willimantic River Greenway was designated as an official Connecticut Greenway in 2003 by the Connecticut Greenways Council. The Willimantic River Greenway is a long-term project to link existing open spaces, to improve the existing canoe/kayak route, to protect natural resources and to extend walking trails and bike routes

along the 25-mile length of the river. The Willimantic River Alliance proposed the greenway nomination to the nine towns adjacent to the river and submitted the nomination to the Greenways Council. The nine towns are Columbia, Coventry, Ellington, Lebanon, Mansfield, Stafford, Tolland, Willington, and Windham. These towns have committed to including the greenway in each town's Plan of Conservation and Development and to pursuing projects to enhance natural resources and recreation along the river.

In 2012, U.S. Secretary of the Interior, Ken Salazar, announced that the 21-mile Willimantic River Water Trail was designated a National Recreation Trail (NRT). The Willimantic River Alliance applied for this national recognition in cooperation with The Last Green Valley (TLGV).

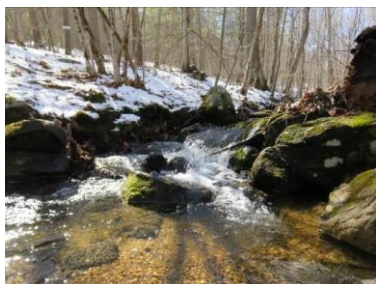
[Access - This property can be accessed between #106 and #116 Fox Ridge Lane. Parking for the property is on Fox Ridge Lane, a dead-end street with a cul-de-sac at the end. The property can also be accessed from the trail from King Riverside Conservation Area.](#)

Formatted: Font color: Auto

Potential Uses – In accordance with the purchase funding, uses of the property must be limited to passive recreation. Accepted uses include:

- Hiking.
- Snowshoeing and cross-country skiing.
- Dog walking on leash and under owner's control; town ordinance requires dogs to be on a leash.
- Habitat, wildlife and nature study.

The Tolland *Conservation Commission Standards for Mountain Biking and Horseback Riding Use of Trails* must be met. Horseback riding is not allowed because the following standards for horseback riding are not met: trails to be at least eight feet wide. Mountain biking is also not allowed because the following standards for mountain biking are not met: trails to be at least 4 feet wide, consistency with permitted and non-permitted activities on abutting conservation properties.



Use Restrictions –The purchase of this property by the Town was funded by passive open space bond funds. This funding source requires that the property must be used as a passive open space conservation area in perpetuity.

Use Restrictions and Visitor Responsibilities – Visitors are to use the property in a manner consistent with land use guidelines for the protection of open space resources. The following guidelines are the standards for use and are identified on parcel signage:

- Dogs must be leashed and under control.
- Leave no trace.
- No horseback riding or mountain biking.
- No motorized vehicles or other means of motorized transport.
- Visitors shall stay on marked trails.
- Do not disturb vegetation or wildlife.
- No setting of fires.
- No hunting or firearms allowed.
- No littering. Carry out what you carry in.
- Respect the rights of other visitors.
- Area is closed from sunset to sunrise. Night use is by permit only.

- Notify the Conservation Commission of organized group activities.

II. OPEN SPACE MANAGEMENT PLAN

Management objectives – The principal objectives are to conserve the property and protect wildlife habitat while providing access and passive recreational opportunities for the general public. While the Conservation Commission acting as an agent of the Tolland Town Council is ultimately responsible for property management, implementation of a management program is a shared responsibility with the Tolland Conservation Corps, Property Steward(s), and a variety of Town agencies in accordance with the *Open Space Management Guideline and Process*.

Specific objectives for this parcel include:

- Follow best property management processes.
- Construct and maintain the approved trail system.
- Conduct a natural resource inventory.
- Pursue educational, documentation, and protection opportunities for habitat, wildlife, and unique features.
- Protect the brook, stonewalls and foundation.
- Clear the foundation of invading plant growth.
- Install and maintain map containers, trail map, directional signs, and name sign.
- Research the history of the stone walls and foundation area.

Although it is not the intention of the Conservation Commission to manage this property for timber production with periodic commercial harvests, it may be necessary, from time to time, to carry out certain silviculture practices to maintain the health of the forest or to encourage a particular habitat. Such management activities, if deemed necessary, will be done in consultation with a professional forester to ensure that the appropriate practices are implemented.



Management Plan and Program – Tasks required to assure management objectives are achieved shall be overseen by the Conservation Commission and implemented by the Head Steward and the Property Steward. Tasks include:

- Maintain the approved trail system.
- Maintain trail markings and signs.
- Maintain map containers and keep supplied with property brochures.
- Protect the brook, stonewalls and foundation.
- Perform litter patrol as needed.
- Maintain property boundary markings. Conduct a yearly walk of the boundaries.
- Keep the old Nedwied Road clear for emergency access.

Attachments

- 2012 Aerial Map
- Topographical Map
- Wetlands Map
- Trail Map
- Connector map showing Willimantic River trail in Tolland – Coventry – Mansfield

The stewards for this property is ~~Ute Winebrenner~~, are Steve and Art Jones.

2012 Aerial Map



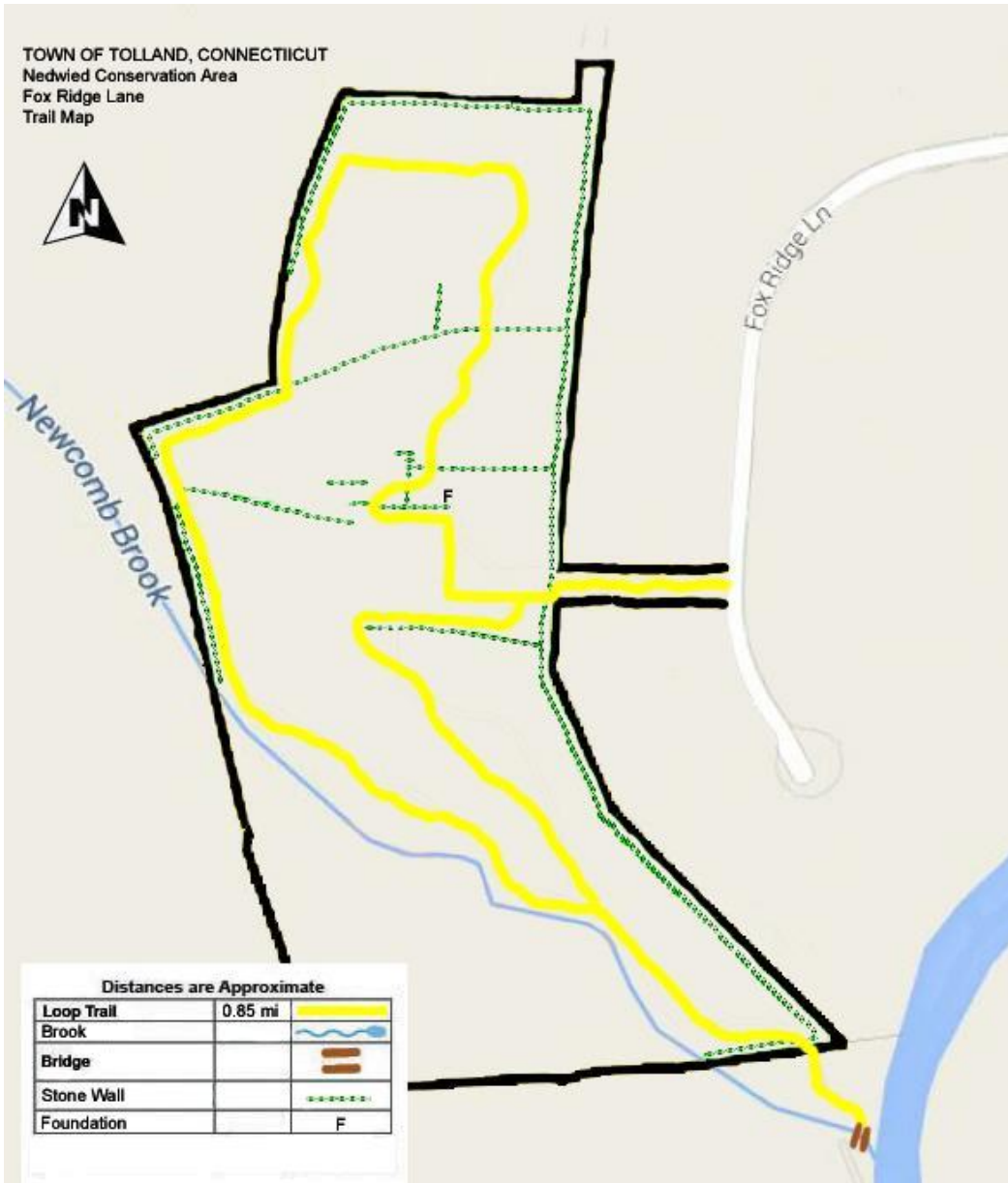
Topographical Map



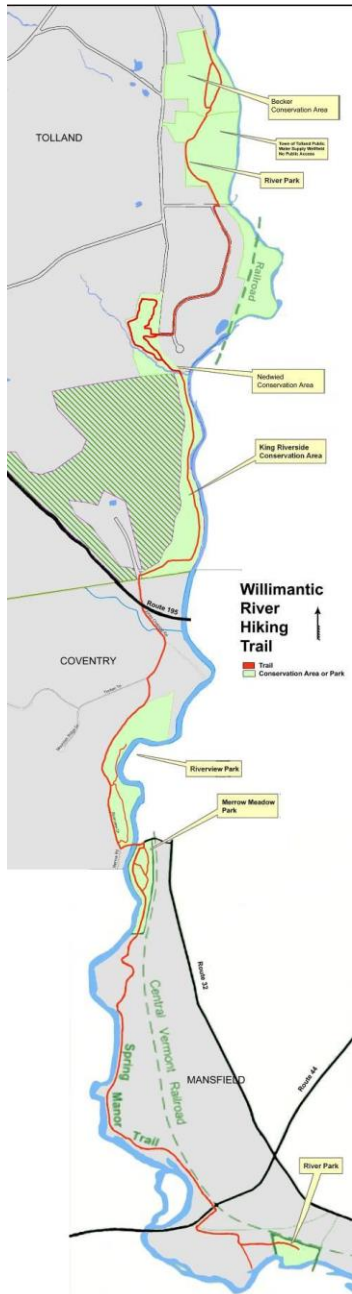
Wetlands Map



Trail Map



Connector map showing Willimantic River trail in Tolland – Coventry – Mansfield



Tolland Conservation Commission (TCC)

Meeting minutes

13 July 2023 at 7:02 p.m.

Virtual meeting via Zoom

1. Call to order 7:02 p.m.

2. Roll call

TCC Members: J. Hutton (Chairman), E. Koss, S. McKown, A. Grossman, J. Simao

TCC Alternates: L. A. Swan, P. Webbe

Public: D. Corcoran (Town Planner)

3. Seating alternates

Quorum present.

4. Public comments

There were none.

5. Additions and changes to agenda

J. Hutton added Item 7.2 – Parciak Stewardship Plan.

6. New business

- a. There was none.

7. Old business

7.1. 2023 Photo/Poetry Contest

Discussion on the deadline for the photo/poetry contest was held. It was decided that if the photo/poetry information has already been posted, the submission date will remain 8/1/2023. If the photo/poetry information has not been posted then to allot more time, the submission date will be revised to 9/30/23. Winners will be decided at the October meeting and a 2nd meeting will be held in October to present awards. David Corcoran reported the gift cards have been purchased.

7.2 Parciak Stewardship Plan

The commission reviewed an email from Mark Summers expressing concern for the plan to log the Parciak property. A discussion on industrial logging versus selective harvesting was held. Also, the stewardship plan and background was discussed. It was stated that when deciding the stewardship plan for this area, the commission did an evaluation and with the help of a professional consulting forester decided that selective harvesting is the best approach for the health of the forest and long-term sustainability. It was noted that the public may not understand the difference between industrial logging and the selective harvesting that will be used at Parciak. To help with concerns, J. Hutton will schedule a tour in September of the area with commissioners, forester/consultant, and public that are interested in attending.

8. Reports from Head Steward and subcommittees

8.1 Conservation Corp

There was no report.

8.2 Management plans

J. Hutton stated that The Nedwied Management Plan is ready for review. He is doing a first review and then will send it out to all commissioners for approval.

8.3 Communication and education

J. Simao reported 6 women attended the last women's hike. She also reported that the display case at the library will be completed on 8/1/2023 and thanked P. Webber for her poster and R. McCann for the beaver stumps. J. Simao is also looking for ideas for the fall scare crow contest. A slide show documenting the Grade 6 project was viewed. Also, it was reported that the Joshua Trust will be holding Wednesday nature walks at 8 AM. The walks are about 2 miles long and very informative.

8.4 Property boundaries and trail mapping

There was no discussion on this topic.

8.5 Town-owned property evaluations

J. Hutton reported that the development behind Big Y is moving along. D. Corcoran reported that everything is going according to plan. Environmental scientists have been providing reports quarterly. D. Corcoran will email the commissioners the report.

8.6 Wanat property design implementation

P. Webbe stated that the new plants are growing and need to be thinned out. J. Hutton recommended that 2 of the Grey Bush Dogwoods in the pollinator garden could be moved either between the labyrinth and parking lot or next to the bench that is south of the labyrinth. J. Hutton will check with R. McCann and B. Rubino if this will interfere with the farmer cutting the grass at Wanat.

8.7 Grant writing and fundraising

There was no discussion on this topic.

9. Reports and information from other organizations:

E. Koss stated that Bolten Lake Watershed Alliance has approved bylaws to organize their group more formally. This helps when applying for grants.

10. Staff updates

D. Corcoran stated that the Inland/Wetlands and Water Courses Commission (IWWC) will hold a hearing in August on the adoption of the Wetlands Special Concern Plan. The IWWC is considering increasing the Upland Review Area for certain sensitive areas including the wetlands in the vicinity of the White Cedar Swamp found just north and east of Upper Bolton Lake in Tolland.

11. Items for next meeting

There were none.

12. Announcements

J. Hutton stated that a Linden tree was purchased and planted at Sage Meadow and looks good.

13. Approval of previous minutes

A motion was made by E. Koss; P. Webbe 2nd to accept the minutes of 8-June 2023. The motion was unanimously approved.

14. Adjournment

A motion was made by E. Koss; P. Webbe 2nd to adjourn meeting at 7:56 p.m. The motion was unanimously approved.

Respectfully submitted,
Lee Ann Swan
Secretary, Tolland Conservation Commission