

TOLLAND



DISTRIBUTION TREE RELIABILITY



TOTAL MILES SCHEDULED

2.8

TOWN TOTAL

132.3

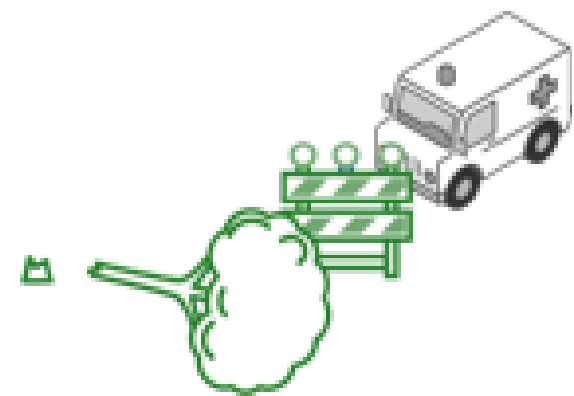


BACKBONE MILES SCHEDULED

0.1

TOWN TOTAL

21.6



BLOCKED ROADS (2018-2022)

51



CUSTOMER REFUSALS & LIGHT TRIMS
(2018-2022)

85

TREE RELIABILITY 2022

CUSTOMERS SERVED

6,223

PERCENT TREE-RELATED OUTAGES

44%

OUTAGES

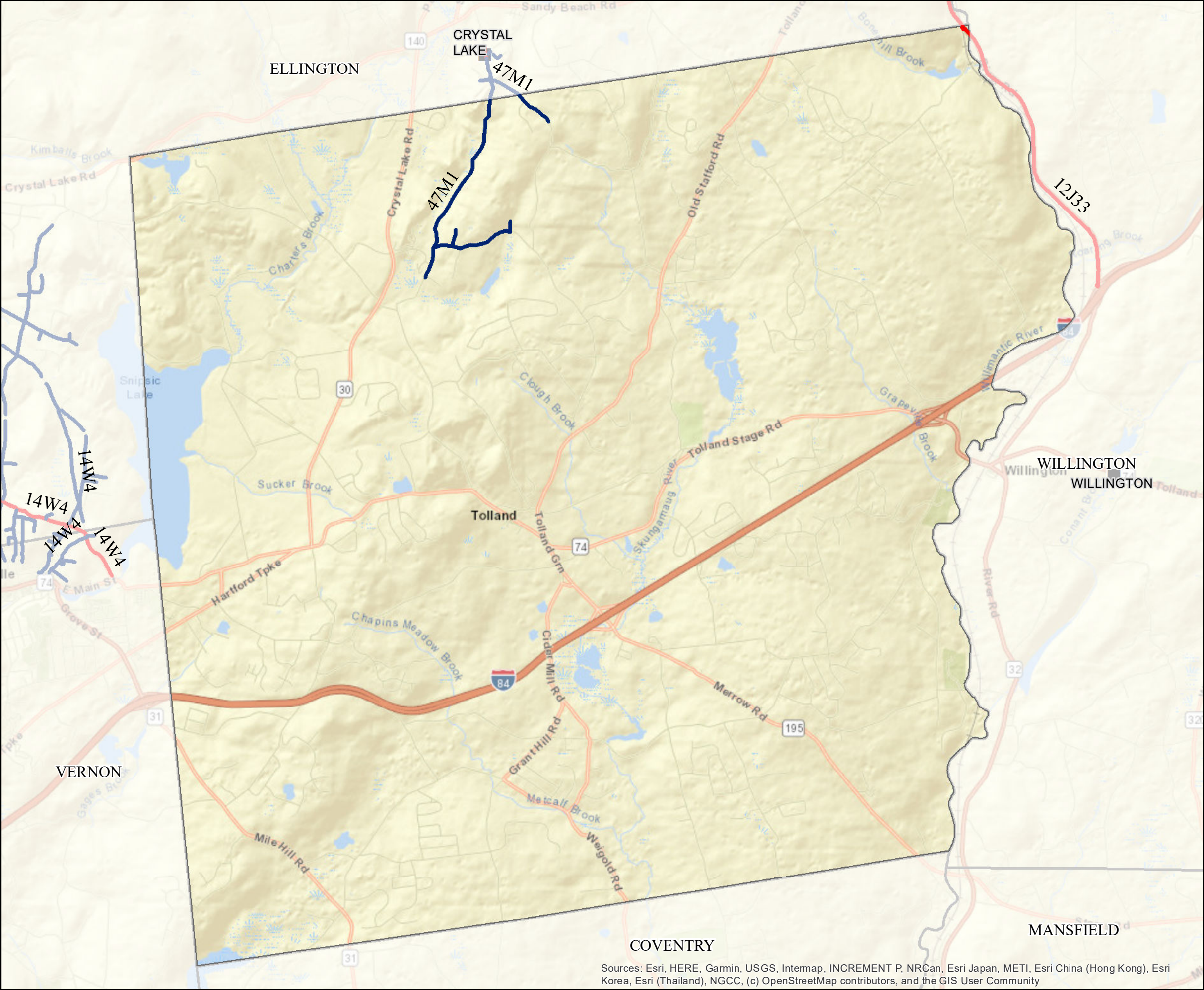
178

CUSTOMERS IMPACTED

1,826

MINUTES CUSTOMERS IMPACTED

274,542



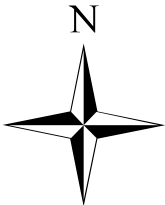
TOLLAND

OH Primary 2023 Trimming

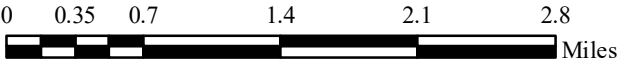
- Backbone Maintenance Trimming
- Scheduled Maintenance Trimming
- Substations
- Town Boundary

Town Mileage Summary

BB METT:	0.10
SMT:	2.67
Total:	2.78



EVERSOURCE



PROPRIETARY INFORMATION: The material contained on the Overhead Distribution Circuit Map shall be considered proprietary to Eversource (ES), and Users (which shall be defined as any person or entity who has received the Map through sale, purchase, exchange gift, or otherwise) shall keep it in confidence and shall not furnish or disclose it to any third party without the prior written permission of Eversource.

Date: 6/20/2022

Sources: Esri, HERE, Garmin, USGS, Intermap, INCREMENT P, NRCan, Esri Japan, METI, Esri China (Hong Kong), Esri Korea, Esri (Thailand), NGCC, (c) OpenStreetMap contributors, and the GIS User Community