

**Town of Tolland, Connecticut
Conservation Commission
Palmer Kendall Mountain Conservation Area
Management Plan
Kendall Mountain Road**



A Passive Recreation Open Space Conservation Area

Revised by Commission: January 28, 2016

Adopted by Council: May 24, 2011

Town of Tolland

Conservation Commission Property Management Plan

Palmer Kendall Mountain Conservation Area, Kendall Mt. Road

Background – The Tolland Conservation Commission is responsible for the management and oversight of properties obtained by the Town of Tolland for conservation purposes and for preparing a management plan for each property. The management plan is based upon the environmental characteristics of the property and is used to determine appropriate conservation and usage. Each plan includes a property description, an analysis of the unique characteristics and acceptable uses of the property, and a management program. The management program outlines property management; improvement needs; the individuals and organizations that manage the property; and protection needs related to the site. Each management plan is developed under the Commission's management planning process.

I. PROPERTY DESCRIPTION, RESOURCES, POTENTIAL, AND CONCERNS

Property Description - The Palmer Kendall Mountain Conservation Area is a 74-acre parcel of land on the north side of Kendall Mt. Road in the north-central section of Tolland. It was purchased in 2007 from Barbara F. Palmer and family with assistance from a grant from the State of Connecticut Open Space and Watershed Land Acquisition program administered by the Connecticut Department of Energy and Environmental Protection. This property is a woodland area with steep terrain and contains the top of Kendall Mountain, which is 972 feet in elevation above sea level and it is the third highest point in Tolland. The property has about 1,200 feet of frontage on Kendall Mt. Road and is located in proximity to the Crystal Peat, Schindler/Schmidt, Knofla, Campbell, and Stoppleworth Conservation Areas.



The property is in the headwaters to the Skungamaug River and has unique geological features with sweeping views from the top of Kendall Mountain. These features, along with a winding brook and dense Mountain Laurel thickets, provide an enticing backdrop for hiking and snowshoeing.

The diverse wildlife habitat of a stream, uplands, caves, and rocky knolls is suitable for amphibians, blue herons, woodcocks, foxes, bobcats, deer, and bears.

Potential Uses – In accordance with the DEEP grant conditions, uses of the property must be limited to passive recreation. Accepted uses include:

- Hiking
- Snowshoeing and cross-country skiing
- Dog walking on leash and under owner's control; town ordinance requires dogs to be on a leash
- Habitat, wildlife and nature study

The Tolland *Conservation Commission Standards for Mountain Biking and Horseback Riding Use of Trails* must be met. Horseback riding is not allowed because the following standards for horseback riding are not met: no bridges or boardwalks, not traversing frequently wet areas or watercourses, trails to be at least eight feet wide, base to be a firm material. Mountain biking is also not allowed because the following standards for mountain biking are not met: trails to be at least 4 feet wide, no traversing frequently wet areas.



Use Restrictions - With the transfer of the property to the Town, there are inherent restrictions under the State of Connecticut conservation easement. The conservation easement requires that the property be used as a passive recreation open space conservation area in perpetuity.

Concerns – A sign should be placed on the Ridge Trail warning of the sharp dropoff at the ridge.

Future Plans – Expansion of trail system with a new trail going out to Wildwood Road between #41 and #55, which would then connect with a future trail to the Crystal Peat Conservation Area between #30 and #50 Wildwood Road.

Use Restrictions and Visitor Responsibilities – Visitors are to use the property in a manner consistent with land use guidelines for the protection of open space resources. The following guidelines are the standards for use and are identified on parcel signage:

- Dogs must be leashed and under control.
- Leave no trace.
- No horseback riding or mountain biking.
- No motorized vehicles or other means of motorized transport.
- Visitors shall stay on marked trails.
- Do not disturb vegetation or wildlife.
- No setting of fires.
- No hunting or firearms allowed.
- No littering. Carry out what you carry in.
- Respect the rights of other visitors.
- Area is closed from sunset to sunrise. Night use is by permit only.
- Notify the Conservation Commission of organized group activities.

II. OPEN SPACE MANAGEMENT PLAN

Management objectives – The principal objectives are to conserve the property and protect wildlife habitat while providing access and passive recreational opportunities for the general public. While the Conservation Commission, acting as an agent of the Tolland Town Council, is ultimately responsible for property management, implementation of a management program is a shared responsibility with the Tolland Conservation Corps, Property Steward, and a variety of Town agencies in accordance with the *Open Space Management Guideline and Process*.

Specific objectives for this parcel include:

- Follow best property management processes.
- Identify and preserve historic features and USGS marker.
- Preserve special vegetation and habitat areas such as the stream and Mountain Laurel areas.
- Expand and maintain the approved trail system.
- Provide parking.
- Conduct a natural resource inventory.

- Pursue educational, documentation, and protection opportunities for habitat, wildlife, and unique features.
- Protect and maintain the viewshed.
- Maintain property boundary markings.
- Manage the woodlands following the guidance of a professional forester.



Although it is not the intention of the Conservation Commission to manage this property for timber production with periodic commercial harvests, it may be necessary, from time to time, to carry out certain silviculture practices to maintain the health of the forest or to encourage a particular habitat. Such management activities, if deemed necessary, will be done in consultation with a professional forester to ensure that the appropriate practices are implemented.

Management Plan and Program – Tasks required to assure that management objectives are achieved shall be overseen by the Conservation Commission and implemented by the Head Steward and the Property Steward. Tasks include:

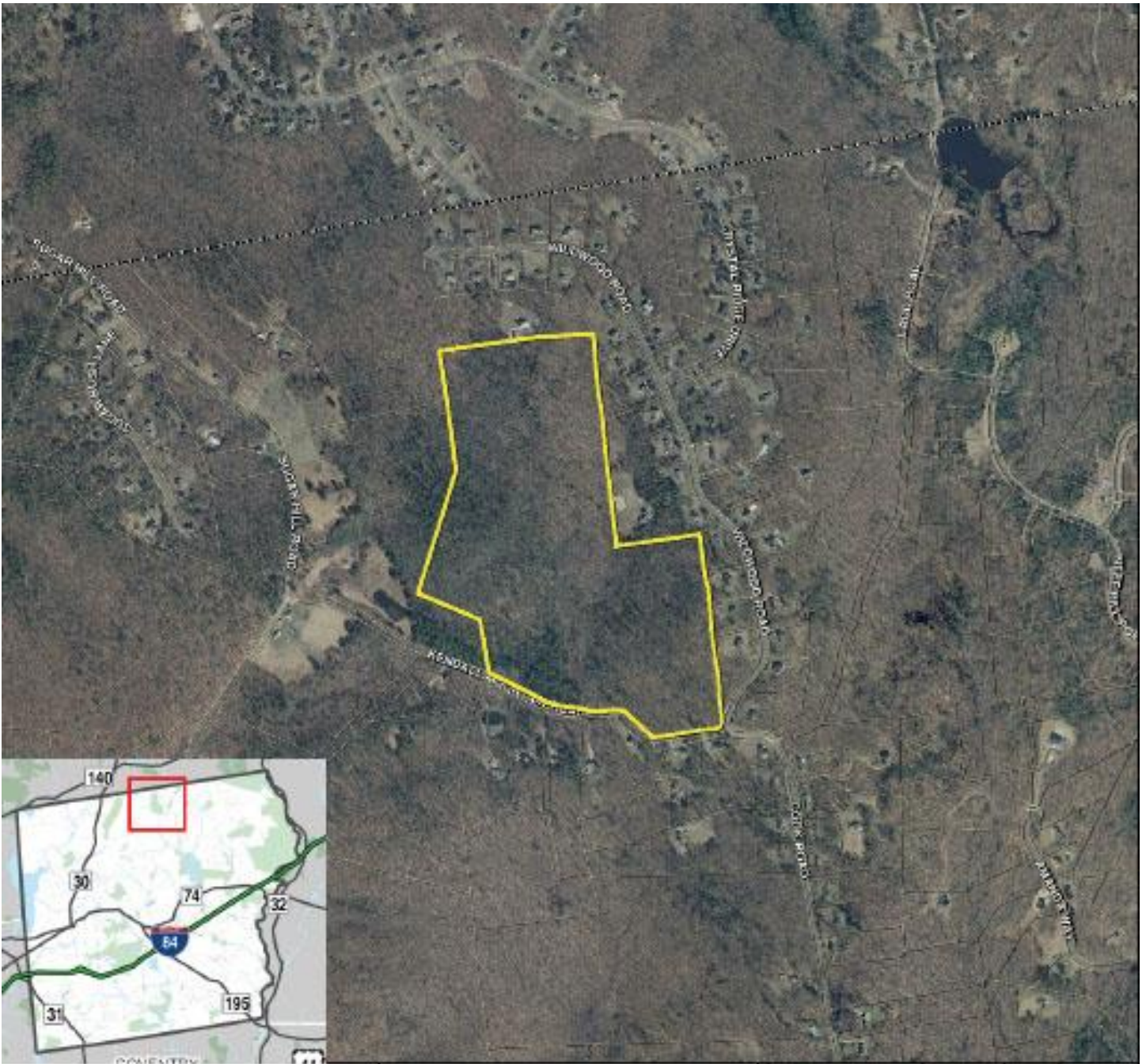
- Maintain the approved trail system.
- Maintain trail markings and signs.
- Maintain map containers and keep supplied with property brochures.
- Perform litter patrol as needed.
- Maintain parking area and access control points.
- Install and maintain property boundary markings. Conduct a yearly walk of the boundaries.
- Protect and maintain viewshed.
- Maintain informational markers.
- Protect the critical vegetation and habitats.

Attachments

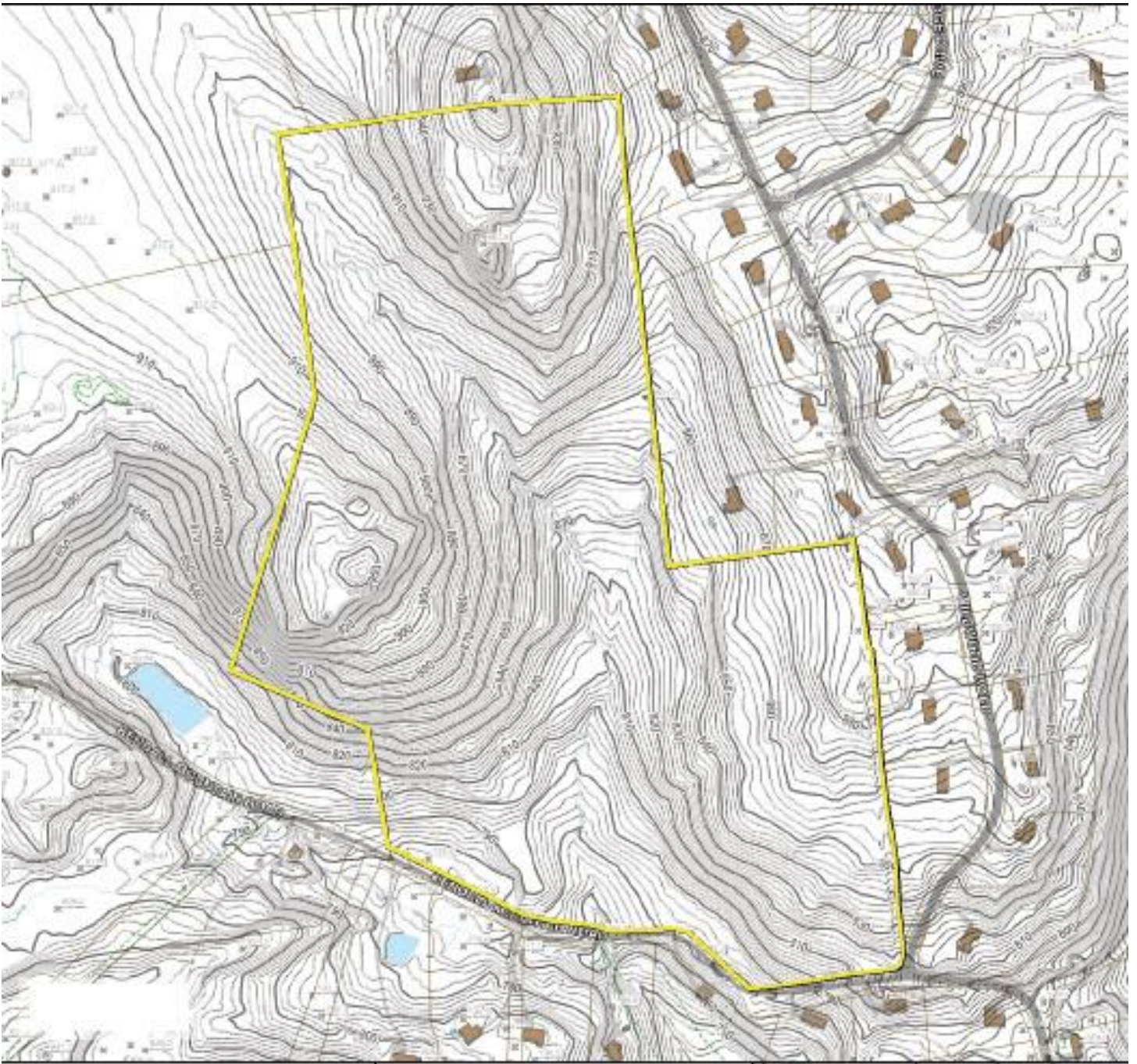
- 2012 Aerial Map with Location Map Insert
- Topographical Map
- Wetlands Map
- Nearby Conservation Areas Map
- Trail Map

The steward for this property is Jackie Ricci.

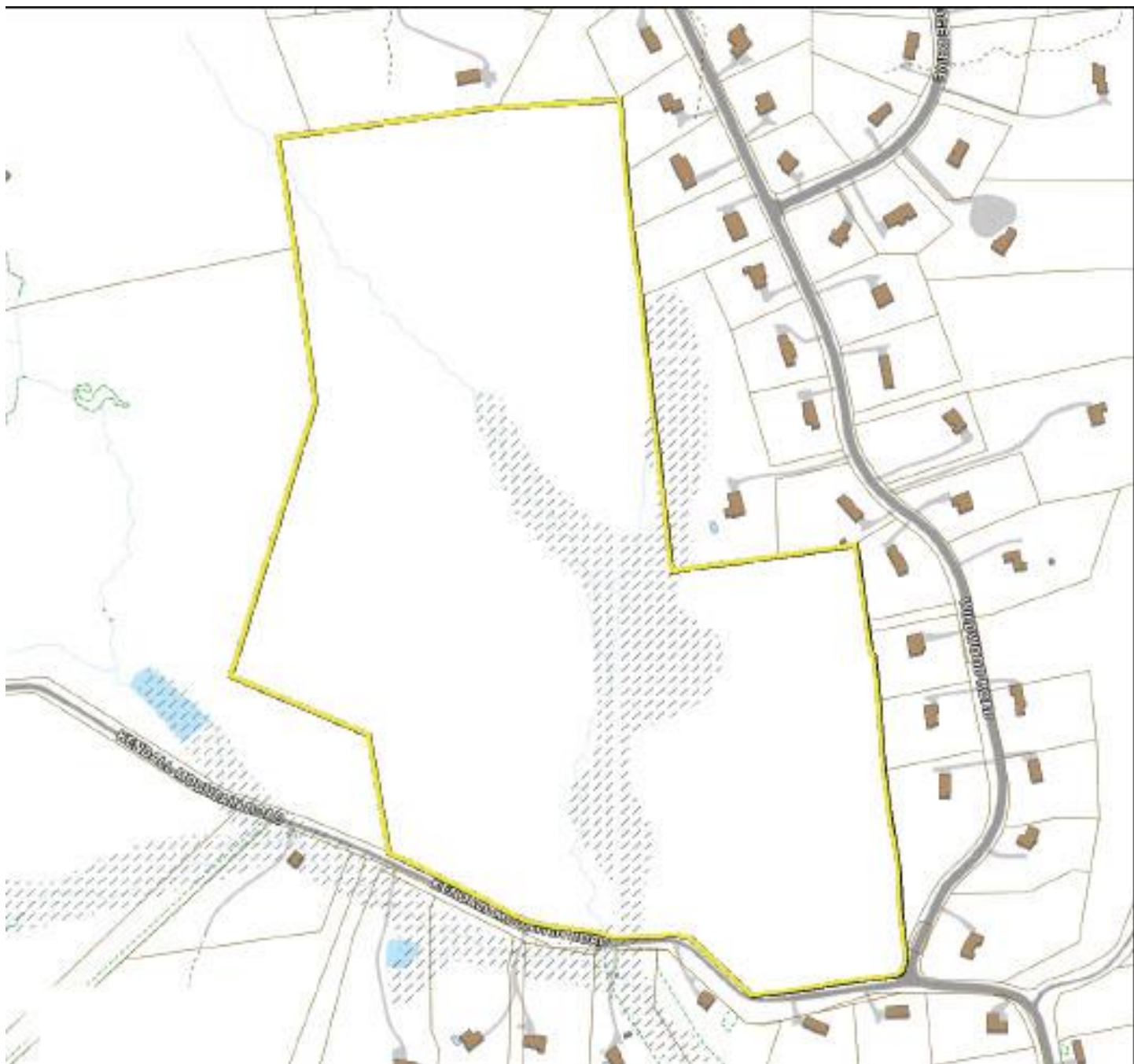
2012 Aerial Map with Location Map Insert



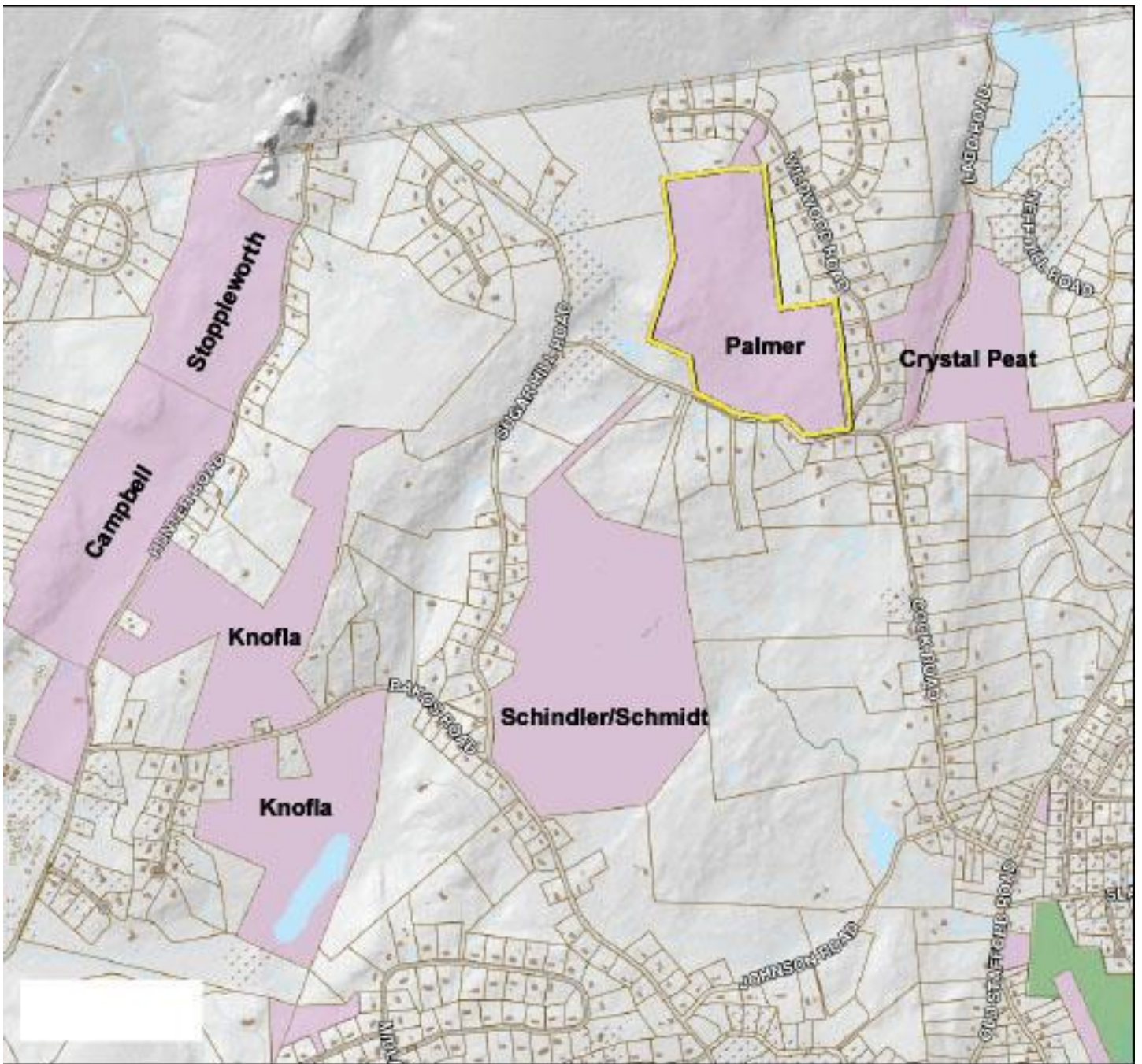
Topographical Map



Wetlands Map



Nearby Conservation Areas Map



Trail Map

Palmer Kendall Mountain Conservation Area

